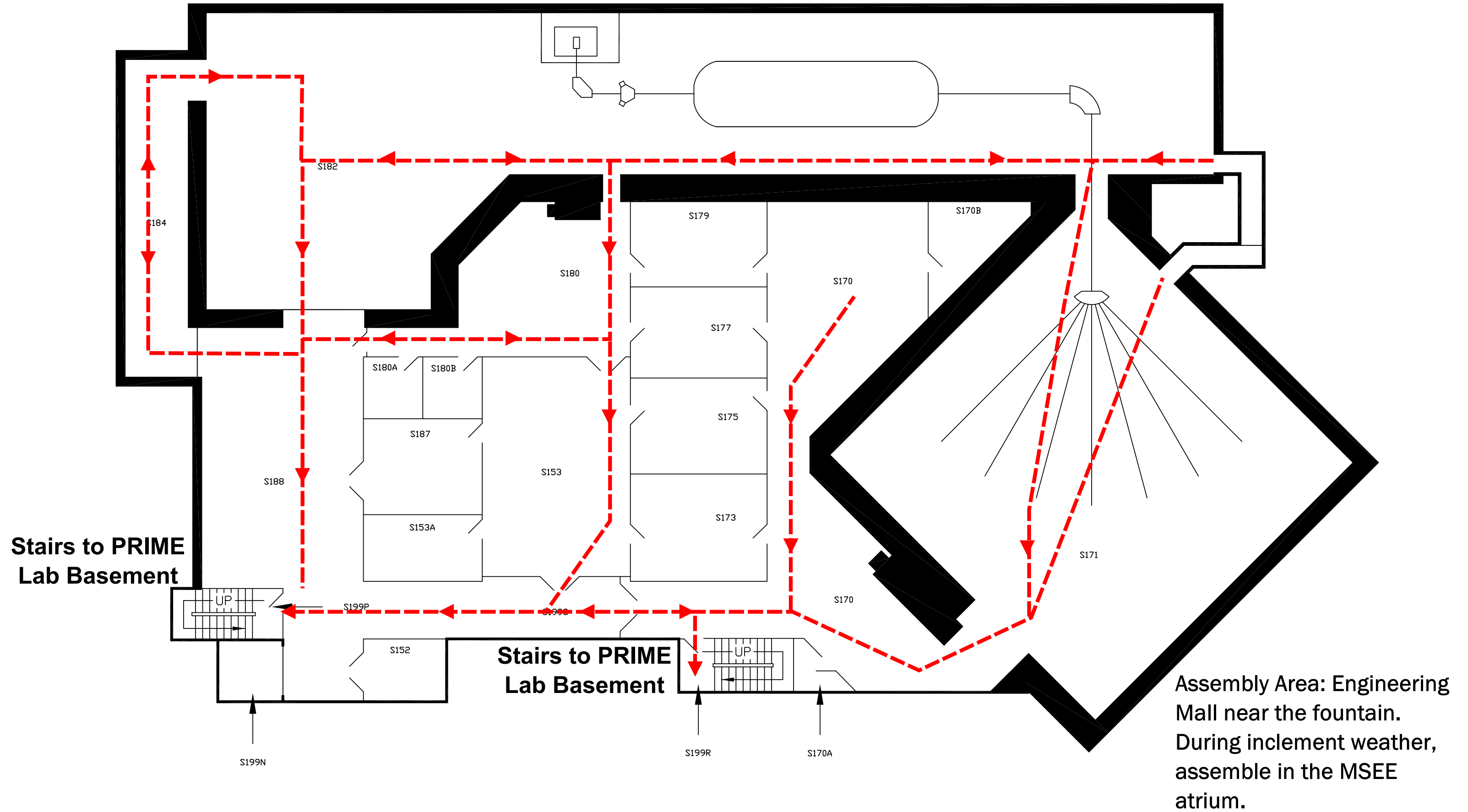
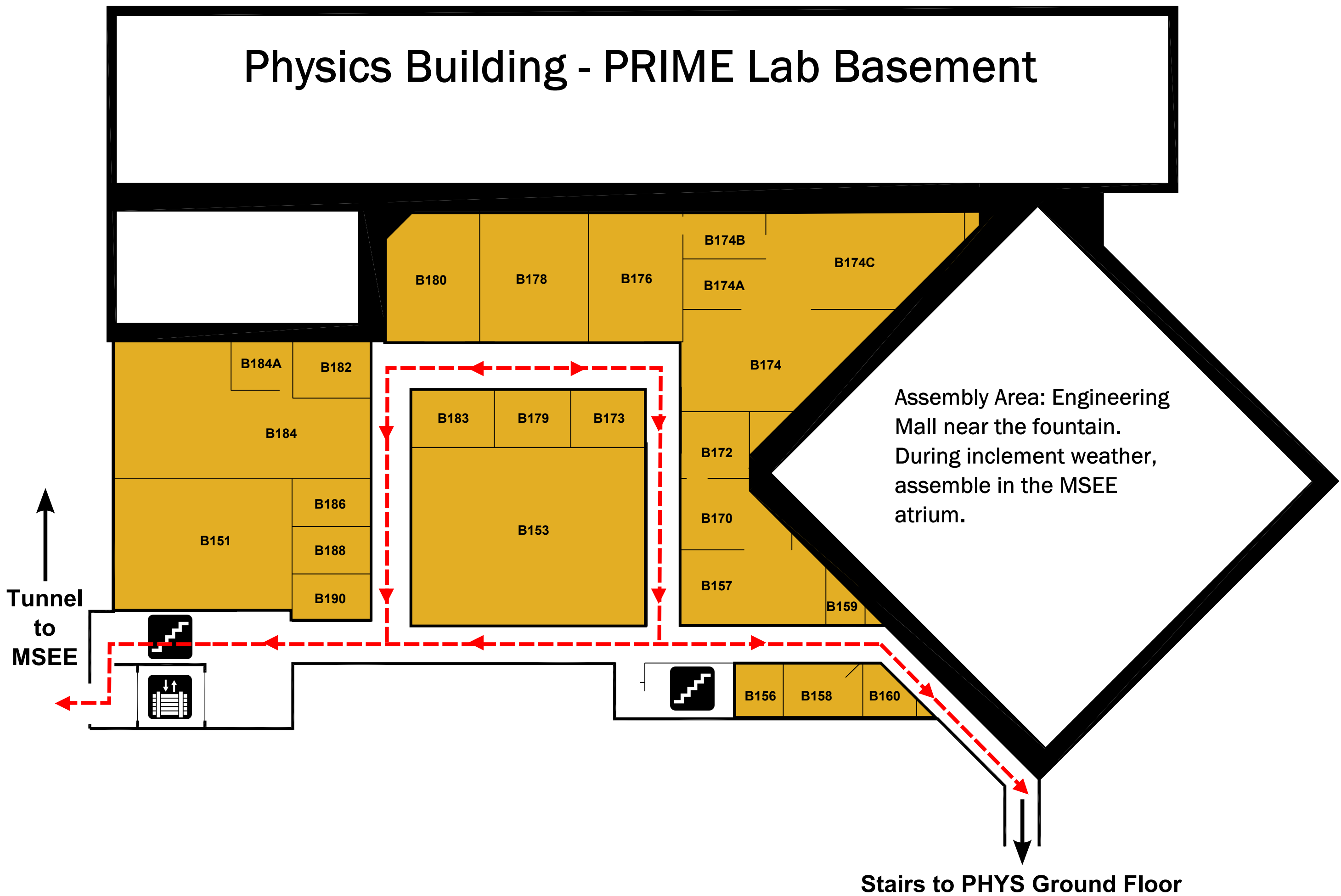


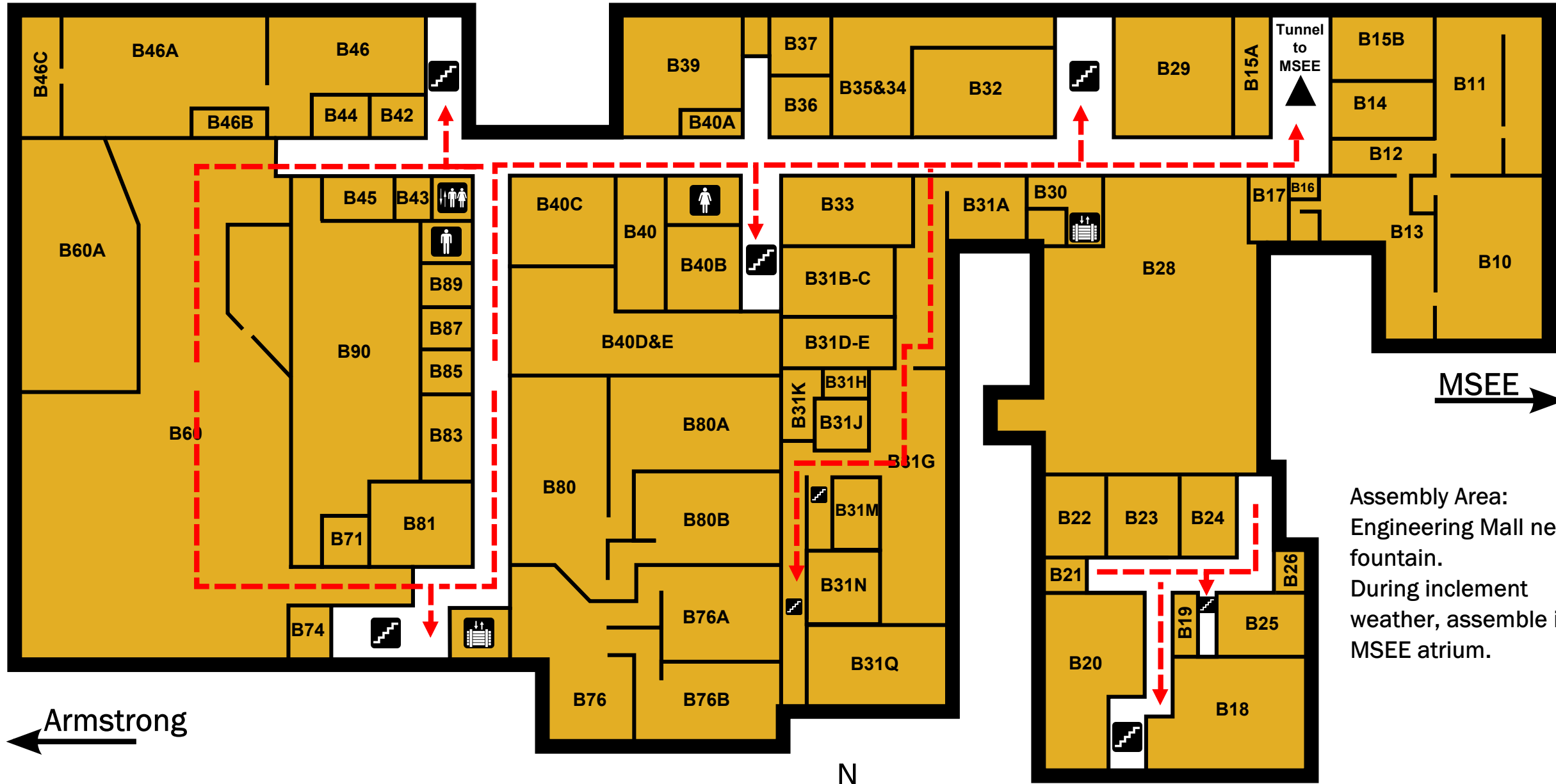
Physics Building - PRIME Lab Sub-basement



Physics Building - PRIME Lab Basement

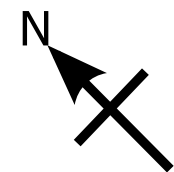


Physics Building - Basement



Assembly Area:
Engineering Mall near the fountain.
During inclement weather, assemble in the MSEE atrium.

	Women's Restroom		Stairwell		Freight Elevator
	Men's Restroom		Elevator		Tunnel to MSEE



← Armstrong

Engineering Mall →

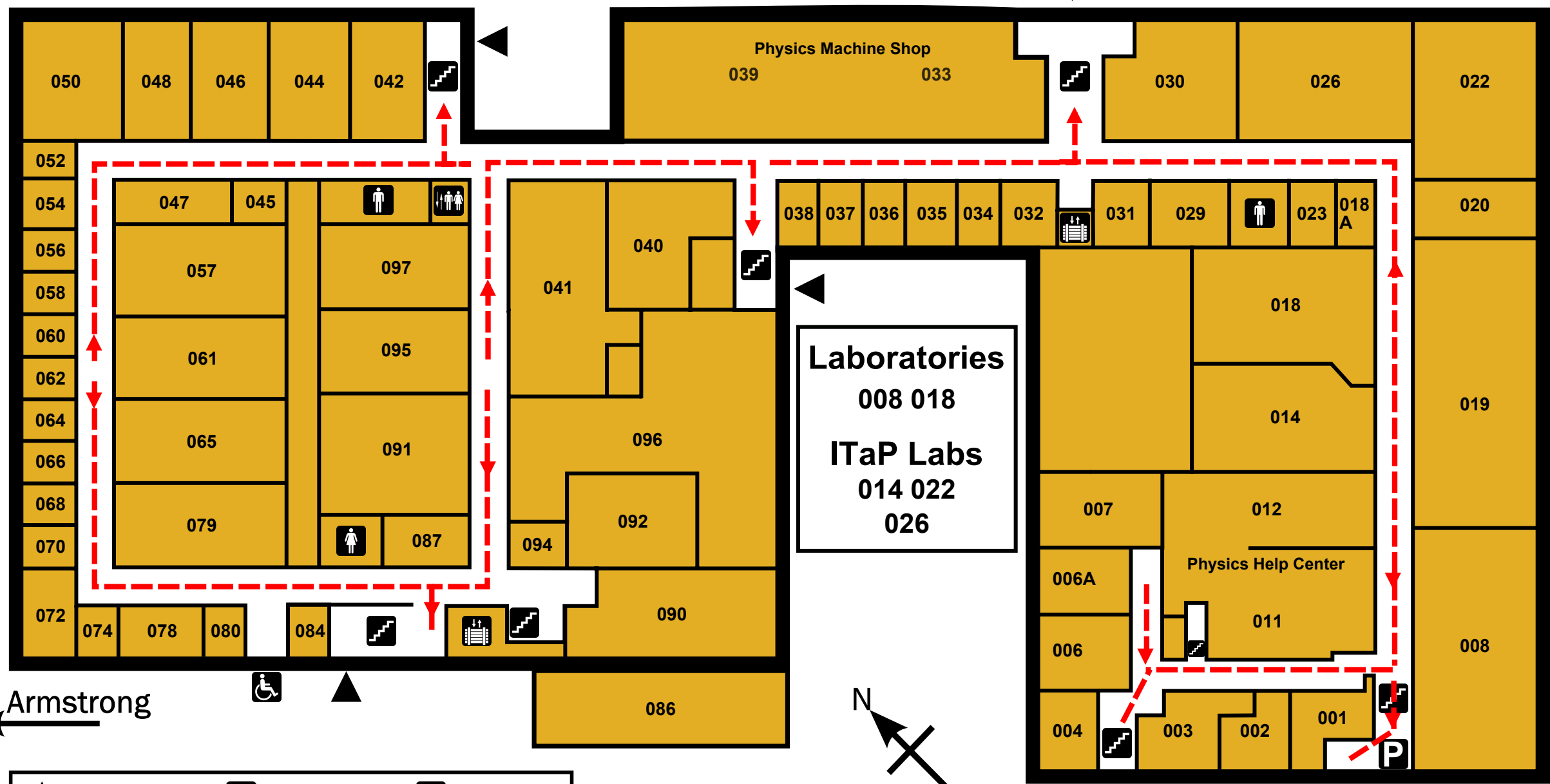
MSEE →

← Northwestern Avenue →

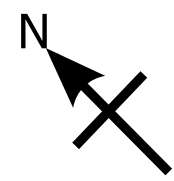
Physics Building - Ground Floor

Northwestern Avenue

MSEE



Armstrong



	Building Entrance		PRIME Lab Entrance		Stairwell
	Wheelchair Accessible Entrance		Women's Restroom		Elevator
			Men's Restroom		Freight Elevator

Assembly Area: Engineering Mall near the fountain.
 During inclement weather, assemble in the MSEE atrium.

Engineering Mall

Physics Building - 1st Floor

← Northwestern Avenue →

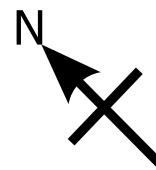
MSEE →



← Armstrong

	Women's Restroom		Stairwell		Freight Elevator
	Men's Restroom		Elevator		Building Entrance

Assembly Area: Engineering Mall near the fountain.
 During inclement weather, assemble in the MSEE atrium.

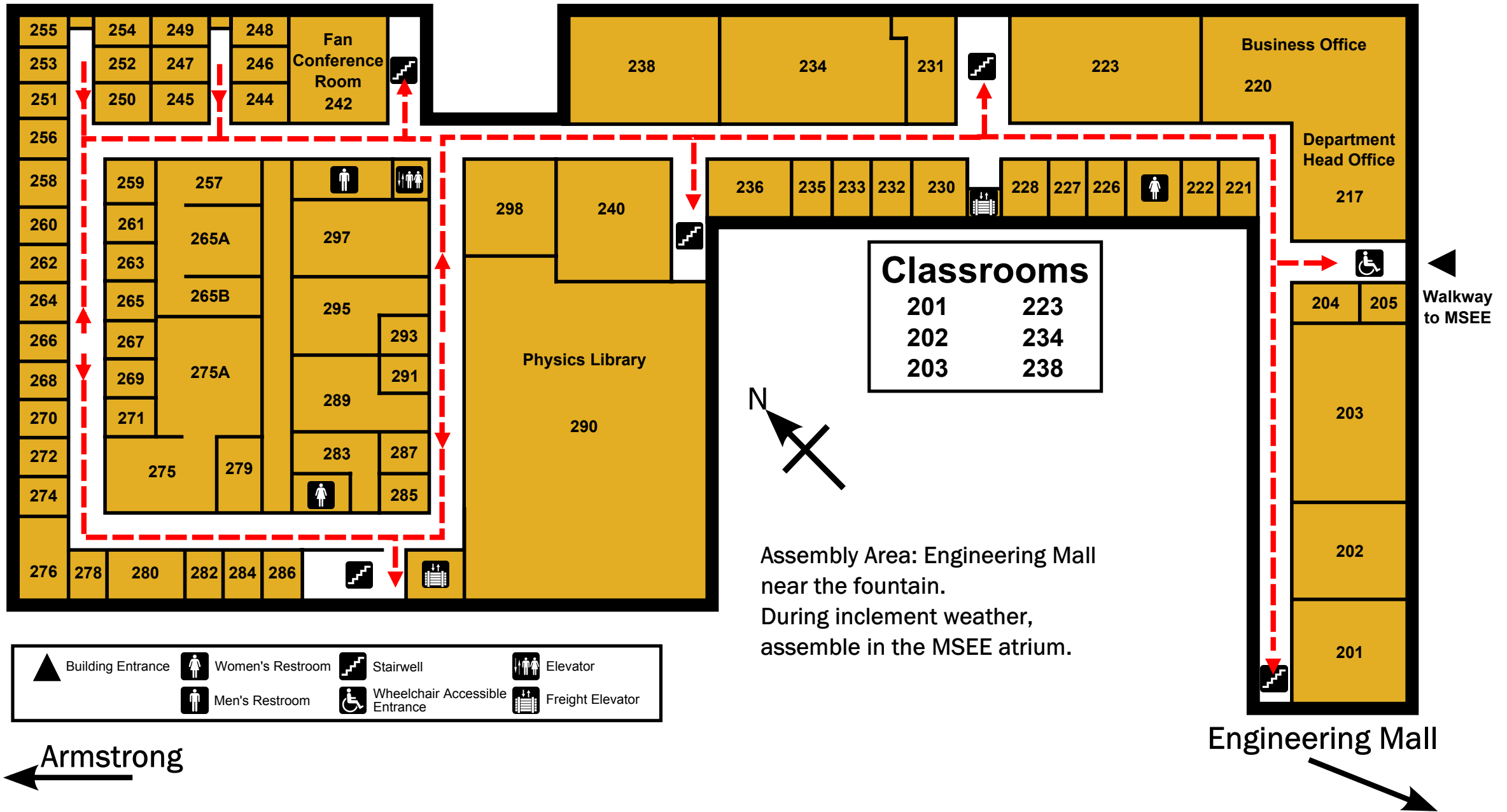


Engineering Mall

← Northwestern Avenue →

Physics Building - Second Floor

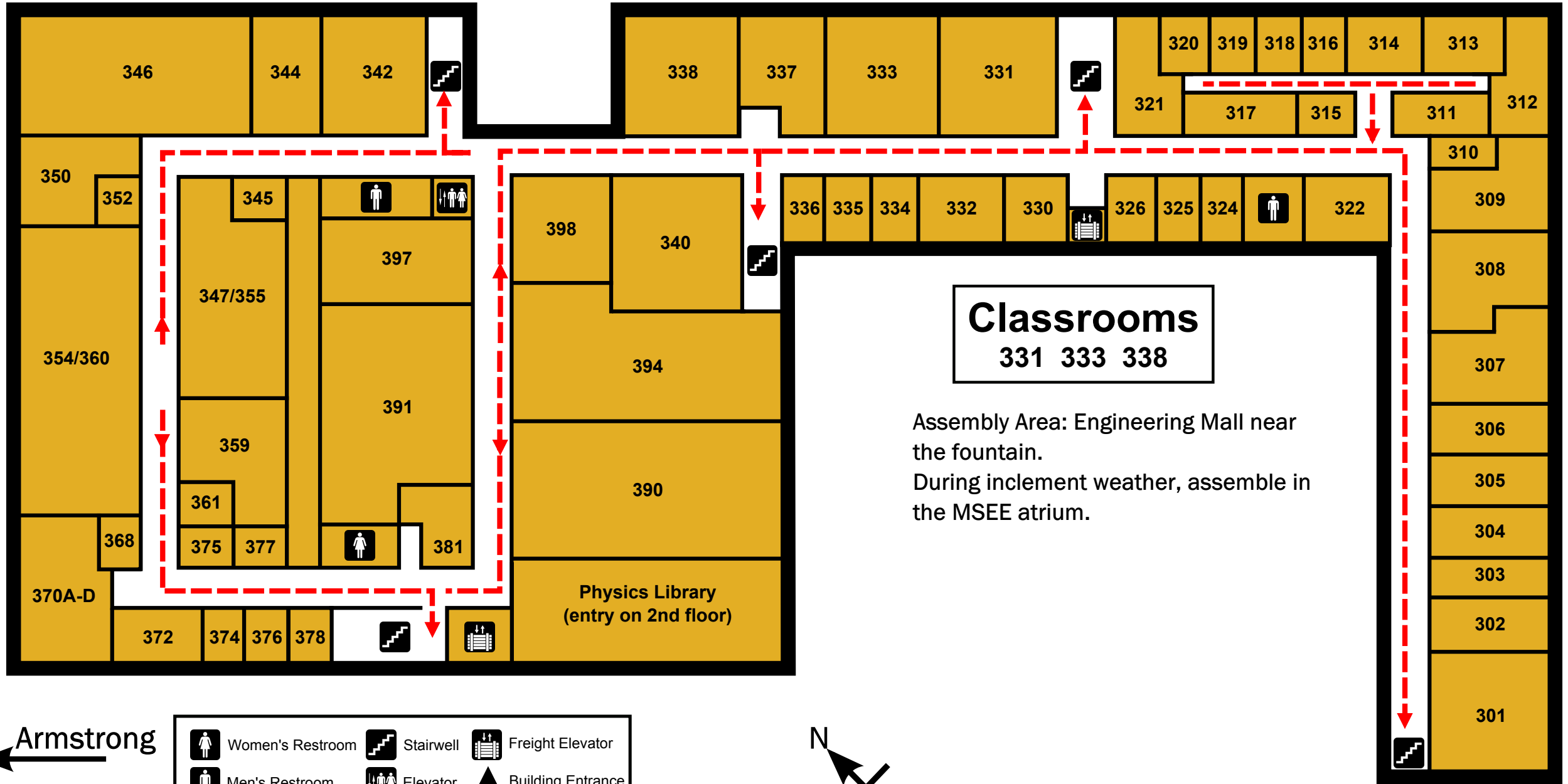
MSEE →



Physics Building - Third Floor

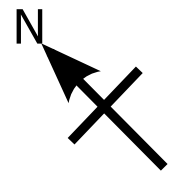
Northwestern Avenue

MSEE



Armstrong

	Women's Restroom		Stairwell		Freight Elevator
	Men's Restroom		Elevator		Building Entrance



Engineering Mall